



Valentines Weekend

*Friday 11th - Sunday 13th February
2022*



Friday 11th February 2022

7.00pm - 9.00pm Dinner
9.00pm - 11.30pm 60's Explosion.
The band is booted, suited and ready for action, not only looking but also sounding the part with vocal harmonies, period inspired equipment and sensitive arrangements. Superb musicians who enjoy their work, are friendly, ultra professional and best of all they play great music.



Saturday 12th February

7.30am - 10.00am Breakfast
7.00pm - 9.00pm Dinner with Flowers and Chocolates for the Ladies
9.30pm - 12.30am Adele - The Story So far with The Paul Webber
Disco

Sunday 13th February

8.00am - 10.00 am Breakfast

Prices quoted are per person for the Dinner, Room and Breakfast package for 2 nights inclusive of VAT

Double Rooms without Balcony	£270.00
Standard Family/Twin Rooms without Balcony	£280.00
Larger Family Rooms	£290.00
King Bedded Ground floor family Room	£300.00
King Bedded Double Rooms with Sea View	£312.00
King Bedded family/Twin Rooms with Sea View	£322.00
King Bedded family/Twin Rooms with Balcony	£334.00
King Bedded family Suites & Ground floor Suites	£450.00
Single Bedded Room	£250.00
Standard Double Room for Single Occupancy	£300.00

Prices for Non - Residents

Friday 11th February

Dinner and Dance with 60's Explosion £35.00 per person

Saturday 12th February

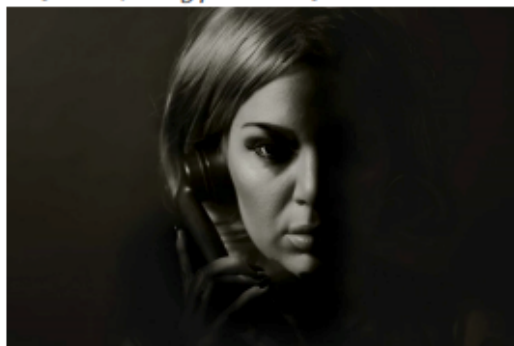
Dinner and Cabaret with Adele - The Story So far
£55.00 per person

Handpicked by Adele to star in Adele At The BBC, Stacey Lee's uncannily similar vocal timbre leaves the star Gobsmacked. Coupled with a beautifully relaxed and honest rapport with audiences worldwide, Stacey captures Adele like nobody else. Not surprising, as both were raised yards from each other in Tottenham, North London and share the same local 'twang' that Adele is synonymous with.

Stacey's band, Someone Like Them, are awash with some of London's finest session musicians, who's CV's alone would make them worthy of their own show.

Adele's Journey So Far has accelerated her from basement vlogger to The Biggest Star on The Planet in the blink of an eye. Her three studio albums have sold an unprecedented 100 million albums worldwide, a number usually only reserved for heritage superstars with 50 year careers.' The show takes you on a journey through Adele's musical and personal life, laid bare for us in such heartfelt lyrics as only Adele can.

Beautiful imagery and video adorn the auditorium as audiences are treated to all the hits and much more, Including Chasing Pavements, Make You Feel My Love, Rolling In The Deep, Someone Like You, Set Fire To The Rain, Rumour Has It, Skyfall & Hello...



The Langstone Cliff Hotel (owned and managed by the Rogers family since 1946 no less!) is situated perfectly on the South Devon Coast, twelve miles from both Exeter and Torbay and seven miles from the M5 motorway.

The 64 en-suite bedrooms are all equipped to a high standard. Many have balconies and sea views. The hotel is spacious with a choice of Lounges and Bars, an air conditioned Restaurant and a magnificent ballroom. It is set in almost 20 acres of Devon woodland with large lawns overlooking the sea and has a footpath leading to the beaches just 500 metres away. A further 300 metres, adjoining the beach, is an Internationally renowned bird sanctuary and an 18-hole links golf course.



Leisure facilities include indoor and outdoor pools, hard tennis court, full size snooker table, table tennis, fitness room, hairdressing salon, toddler room and play centre. There is FREE on-site parking for over 200 vehicles, please register your car with Reception. The hotel regularly presents cabaret weekend with star bands and entertainers.

Please call or visit our website for current details of other events, and a full brochure complete with maps and directions. Easy to reach us. Leave the M5 by junction 30 onto the A379

road to Dawlish (9 miles) and turn left by the small harbour, half a mile after the village of Starcross, Once you are in Dawlish Warren the road turn right up the hill. The Langstone Cliff Hotel is on the left. Rail Travellers - book to Dawlish.

The station is two miles from the hotel and has a taxi rank.